



CLAY CRAFT
FINE BONE CHINA

horeca COLLECTION vol. 5





The Company

Established in the year 1994, in Pink city of India, Clay Craft has carved a niche in the national and international FINE BONE CHINA tableware market. With its enormous trade knowledge and industrial experience, company has grown in leaps and bounds in the industry. Today, Clay Craft is well recognized as a preeminent FINE BONE CHINA crockery manufacturer and one of the distinguished suppliers for the same.

Committed to our motto of “**Quality, quantity & timely delivery**”, we are currently able to expand our wings to all parts of INDIA and around the WORLD, in retail, hospitality & corporate sector.

Infrastructure

Energy and environment friendly kilns, supported with automatic & semi-automatic machines is main feature of our production line, delivering around 75000 pieces daily to its customers.

A state of art laboratory with team of dedicated professionals always keep a vigil on quality and cost of our manufacturing. A modern in house studio with a team of designers keeps fashion alive from product to packaging. Integrating its facilities backward, company has its own Decal/ Transfer printing unit and thermal box manufacturing unit, giving an edge over other manufacturers.

The Product

Bone china is a type of Ceramic body first developed in Britain It is characterized by high whiteness, translucency and strength. Production usually involves a two stage firing where the first, bisque, is without a glaze at 1280 °C (2336 °F), which gives a translucent product and then glaze, or glaze, fired at a lower temperature below 1080 °C (1976 °F).

Pure white double fired body combined with a brilliant super hard glaze is main feature of our all products, also product is-

Highly chip resistant and Durable

Microwave and oven safe

Dishwasher safe

Lead and Cadmium free

The Range

Broadly range is divided in two Segments, Household and Hospitality.

Herewith presenting a complete range designed exclusively for hotels and restaurants for maximum functionality combined with vibrant yet elegant look, a stylish collection in a range of complementary designs which can be mixed and matched to create perfect setting to suit every mood and occasion

The Market

A dedicated network of nearly One hundred distributors and further the wide spread retail outlets all over the country caters the demand of Clay Craft products. The suitable policy is practiced to ensure the value for money and to match the market sophistication. A separate team of officers handles the hotels and institutional business and proper follow-up is done with the prospective customers and after sales follow-up is carried out for the entire satisfaction of customers



Tea & Coffee serving range	02-05
Octa	06-07
Galaxy	08
Belle	09
Zen	10-11
Dotted	12
Amber Series	13
Harmony	14
Tarang	15
Vista	16
Aristo / Urmi	17
Glory/Georgian/Square	18
Karina	19
Divine	20-21
Platters	22-25
Bowls	26-29
Accessories	30-32
Mugs	33
Showcase	34-40

table of contents



An array of shapes and sizes of cup - saucers to suit all choices of settings.

- 1 | Cup saucer HR Big, Vol-280ml.
- 2 | Cup saucer GH Big, Vol-210ml.
- 3 | Cup saucer Oval, Vol-220ml.



cup saucer

Various designs of stackable cups and saucers are suitable for all choices of setting.



Tea & Coffee serving range



CUP SAUCER KAWA
CPRW / SR.RW
DIA-SR 11.3, CP-8,
H 5, VOL 140 ML



CUP SAUCER HW MED
CPRMS / SR.LMS
DIA-SR 12.8, CP-6.9,
H 5.1, VOL 150 ML



CUP SAUCER HW BIG
CPRMS / SR.LMS
DIA-SR 15, CP-7.7,
H 6, VOL 220 ML



CUP SAUCER CREAM
CPCRM / SR.CRM
DIA-SR 13.8, CP-8,
H 6.5, VOL 210 ML



CUP SAUCER DEMITASSE
CPRMS / SR.HMS
DIA-SR 12.6, CP-6.8,
H 4.8, VOL 110 ML



CUP SAUCER HR BIG
CPRHS / SR.HRS
DIA-SR 15.4, CP-8.7,
H 6.3, VOL 280 ML



CUP SAUCER OVAL
CPRVLS / SR.OVLS
DIA-SR 19, CP-8,
H 7.8, VOL 220 ML



CUP SAUCER GH BIG
CPRGHS / SR.GHS
DIA-SR 115.4, CP-8.7,
H 7.6, VOL 210 ML



CUP SAUCER OLD SQUARE
CPRSQO / SR.SQO
DIA-SR 15.1, CP-8.5,
H 6.7, VOL 250 ML



CUP SAUCER STACKABLE BIG
CPRSTB / SR.STB
DIA-SR 14, CP-8.6,
H 5.7, VOL 230 ML



CUP SAUCER STACKABLE SMALL
CPRSTS / SR.STS
DIA-SR 12, CP-7,
H 5, VOL 150 ML



TEA POT CHINESE BIG
TPC.BA
VOL 1150 ML



CREAMER OB6 CUP
CR.OB6
VOL 370 ML



CREAMER OB4 CUP
CR.OB4
VOL 250 ML



CREAMER OB2 CUP
CR.OB2
VOL 150 ML



CUP SAUCER TENDULKAR
CPTEN / SR.TEN
DIA-SR 16, CP-10.9,
H 6.3, VOL 420 ML



TEA POT OB 6CUP
TPOB6
VOL 1540 ML



TEA POT OB 4CUP
TPOB4
VOL 920 ML



TEA POT OB 2CUP
TPOB2
VOL 650 ML



SUGAR SACHET OB
SPOB
DIA-9.5, H-4.5



SUGAR SACHET RECT 7X5
SPSQ.7
DIA-8.4 H 4.3

| Diameter diagonal in cms.



| tea & coffee serving range



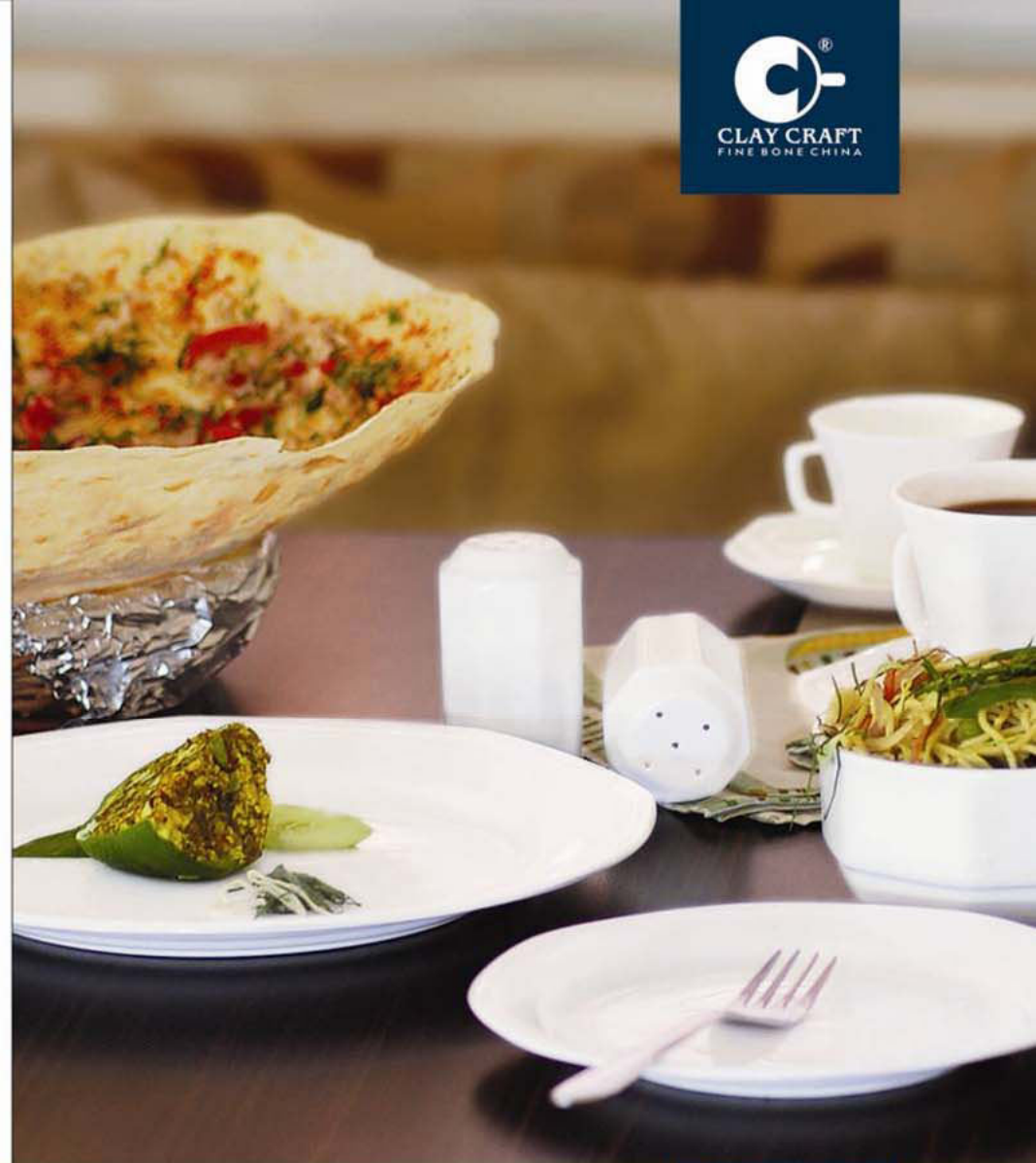
| Chinese tea pot big

Excellent design creates stunning table scenarios.



A clear-cut design exclusively for hotels and restaurants is perfect for serving from breakfast through dinner. This shape has a variety of functional and versatile items which enable you to serve any types of cuisine and can be mixed with plain white items of other shapes.

- 1 | Octa cup saucer
- 2 | Octa 10.5" plate
- 3 | Octa bowl



octa

The design incorporates remarkable beauty and excellent functionality.

OCTA		
1 Plate 11"	PL.OCT.11	
2 Plate 10.5"	PL.OCT.10.5	
3 Plate 9"	PL.OCT.9	
4 Plate 7"	PL.OCT.7	
5 Cup Big	CPOCTB	VOL-240 ML.
6 Saucer Big	SR.OCTB	
7 Cup Small	CPOCTS	VOL-130 ML.
8 Saucer Small	SR.OCTS	
9 Soup Bowl	BL.OCT	VOL-350 ML.
10 Salt Pepper	CT.OCT	



An exquisite contemporary form of dinnerware which best suit hospitality catering. The range and variety of items allow for all choices of setting as desired. Its stunning beauty of round curve compliments food presentation. "Belle" is an absolute answer for modern hospitality usage.



galaxy

GALAXY	
1 Plate 11"	PL.GLX.11
2 Plate 10.5"	PL.GLX.10.5
3 Plate 9"	PL.GLX.9
4 Plate 7"	PL.GLX.7
5 Cup Big	CPGLX.B, VOL-240 ML.
6 Saucer Big	SR.GLX.B
7 Soup Bowl	BL.GLX, VOL-330 ML.

belle

Belle	
1 Plate 11"	PL.BLE.11
2 Plate 10.5"	PL.BLE.10.5
3 Plate 9"	PL.BLE.9
4 Plate 7"	PL.BLE.7
5 Cup Big	CPBLE.B
6 Saucer Big	SR.BLE.B
7 Soup Bowl	BL.BLE

VOL-160 ML.



Zen



12" PLATE
PL ZEN 12
DIA 33.5



11" PLATE
PL ZEN 11
DIA 30.5



10" PLATE
PL ZEN 10
DIA 28



9" PLATE
PL ZEN 9
DIA 25



7" PLATE
PL ZEN 7
DIA 20.5



KATORI
BL ZEN KT
DIA 10.5/H 4



BOWL 1/4 POR
BL ZEN
DIA 11.9/H 3.3/VOL 250ML



BOWL 1 POR
BL ZEN 1
DIA 17.8/H 5.5/VOL 440ML



BOWL 2 POR
BL ZEN 2
DIA 20.3/H 6.7/VOL 600ML



BOWL 4 POR
BL ZEN 4
DIA 24.6/H 7.5/VOL 1000ML



CUP SAUCER SMALL
CP ZEN S/SR ZEN 5
VOL 150ML



CUP SAUCER BIG
CP ZEN B/SR ZEN 8
VOL 200ML



SUGAR POT BIG
SP ZEN B
DIA 8.2/VOL 280ML



MILKPOT BIG
CR ZEN B
VOL 220ML



TEA POT 6 CUP
TP ZEN B
VOL 980 ML



COASTER
CO ZEN



PICKLE TRAY SET
ASC PL ZEN



BUDVASE
PV ZEN



DONGA WITH LID
BL ZEN DON
DIA 22.6/VOL 1500ML



PLATTER BIG
PL ZEN 12
DIA 33.5



SALT PEPPER
CT ZEN
DIA 3.2/H 7.0



SPOON
SN ZEN
DIA 1.8.0



SOUP BOWL
BL ZEN
DIA 11.9/H 5.3/VOL 320 ML



MONKEY DISH
BL ZEN MD
DIA 17.5/H 6.0/VOL 178ML

| Diameter diagonal in cms.



With the delicate appearance and durability enchanted by its brilliant glaze, specially designed to perfectly suit the luxurious table setting in the finest five star hotels and restaurants, from oriental cuisine to the formal western style dining.



dotted

DOTTED	
1 Plate 11"	PL.DOT.11
2 Plate 10.5"	PL.DOT.10.5
3 Plate 9"	PL.DOT.9
4 Plate 7"	PL.DOT.7
5 Cup Big	CFDOT.B, VOL-250ML
6 Saucer Big	SR.DOT.B
7 Soup Bowl	BL.DOT, VOL-320ML

The superb design complements
food presentation.

1 | AMBER SERIES
2 | RIO SERIES
3 | VIVA SERIES



"Harmony" is a contemporary design with classical features. The beauty and strength are perfectly combined into this shape. The warm, white body color combined with a brilliant, super hard glaze meets the demands of today's hospitality industry.

HARMONY

- | | |
|-----------------|---------------------|
| 1 Plate 11" | PL.HM.11 |
| 2 Plate 10.5" | PL.HM.10.5 |
| 3 Plate 9" | PL.HM.9 |
| 4 Plate 7" | PL.HM.7 |
| 5 Cup Big | CPHM.B, VOL-230 ML. |
| 6 Saucer Big | SR.HM.B |
| 7 Soup Bowl | BL.HM, VOL-280 ML. |



Each piece is intently designed to achieve the ultimate blend of form and function.

harmony

tarang

- | | | |
|-----------------|-------------|-------------|
| Tarang | | |
| 1 Plate 11" | PL.TAR.11 | |
| 2 Plate 10.5" | PL.TAR.10.5 | |
| 3 Plate 9" | PL.TAR.9 | |
| 4 Plate 7" | PL.TAR.7 | |
| 5 Cup Big | CPTAR.B | VOL-220 ML. |
| 6 Saucer Big | SR.TAR.B | |
| 7 Soup Bowl | BL.TAR | VOL-300 ML. |



vista

- VISTA
- | | |
|-----------------|-----------------------|
| 1 Plate 11" | PL.VIS.11 |
| 2 Plate 10.5" | PL.VIS.10.5 |
| 3 Plate 9" | PL.VIS.9 |
| 4 Plate 7" | PL.VIS.7 |
| 5 Cup Big | CP.VIS.8, VOL-220 ML. |
| 6 Saucer Big | SR.VIS.8 |
| 7 Soup Bowl | BL.VIS, VOL-290 ML. |



- ARISTO
- | | |
|-----------------|-------------|
| 1 Plate 11.5" | PL.ARS.11.5 |
| 2 Plate 7.5" | PL.ARS.7.5 |



- URMI
- | | |
|---------------|----------|
| 1 Plate 12" | PL.UR.12 |
| 2 Plate 11" | PL.UR.11 |
| 3 Plate 10" | PL.UR.10 |
| 4 Plate 9" | PL.UR.9 |
| 5 Plate 7" | PL.UR.7 |

The plate selection has various sizes to serve multi-purposes.

Glory



11" PLATE
PL. GL. 11



10" PLATE
PL. GL. 10



7" PLATE
PL. GL. 7



CUP SAUCER
CP. GL. 8 / SP. GL. 8
DIA. 5R: 14, CP: 8.8,
H: 5.5, VOL: 220 ML



SOUP BOWL
BL. GL.
DIA: 11.5, H: 5.4
VOL: 370 ML

Georgion



12" PLATE
PL. GG. 12



11" PLATE
PL. GG. 11



10.5" PLATE
PL. GG. 10.5



9" PLATE
PL. GG. 9



7" PLATE
PL. GG. 7

Square



11" PLATE
PL. SQ. 11
DIA: 30.3



10" PLATE
PL. SQ. 10
DIA: 28.0



9" PLATE
PL. SQ. 9
DIA: 25.0



7" PLATE
PL. SQ. 7
DIA: 21.8



CUP SAUCER
CP. SQ. 9 / SP. SQ. 9
DIA. 5R: 14.7, CP: 8.2
H: 6.7, VOL: 240 ML



SOUP BOWL
BL. SQ.
DIA: 11.3, H: 5.8
VOL: 330 ML

| Diameter diagonal in cms.



Fine Bone china is crafted for luxurious fine dining. An exceptionally translucent body and brilliant glaze give this tableware a delicate high quality appearance which belies its high strength and durability.



Different designs of plate is perfect for quality food presentation.

1 | GLORY SERIES
2 | KARINA SERIES

Divine



11" PLATE
PL.DIV.11



10" PLATE
PL.DIV.10



9" PLATE
PL.DIV.9



7" PLATE
PL.DIV.7



12" PLATTER
PL.DIV.12



SOUP BOWL
BL.DIV.
DIA-12, H-9, VOL-300ML



BOWL 2 FOR
BL.DIV.2
DIA-22, H-5.5, VOL-1000ML



MONKEY DISH
BL.MD.DIV.
DIA-13, H-3.8, VOL-190ML



SUGAR POT
SP.DIV.8
VOL-170ML



TEAPOT 6 CUP
TP.DIV.8
VOL-1250ML



MILK POT
CR.DIV.8
VOL-190ML



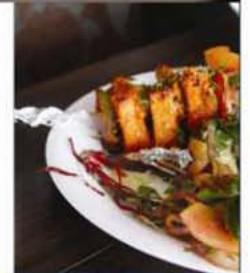
CUP SAUCER BIG
CP.DIV.8/SA.DIV.8
DIA-SR 14.5, CP-8.8, H-6.1
VOL-220ML



CUP SAUCER SMALL
CP.DIV.5/SA.DIV.5
DIA-SR 14, CP-8, H-5.8
VOL-170ML



With the delicate appearance and durability enchanted by its brilliant glaze, Our fine bone china range is specially designed to perfectly suit the luxurious table setting in the finest five star hotels and restaurants, from oriental cuisine to the formal western style dining.



divine



PAPER PLATTER SMALL
PT.PP.20
DIA 20X20 CM.



PAPER PLATTER BIG
PT.PP.25
DIA 25X25 CM.



STARTER PLATTER SMALL
PT.SP.27
DIA 27 CM.



STARTER PLATTER BIG
PT.SP.37
DIA 37 CM.



OVAL PLATTER SMALL
PT.OV.25
DIA 25 CM.



OVAL PLATTER MEDIUM
PT.OV.32
DIA 32 CM.

PLATTERS

Finest Bone china always creates a dialogue between the guest and the food. New collection of bone china platters range is no exception.



BAMBU KARAB PLATTER
PT.FR.BK
DIA 31X18 CM.



SERVING PLATTER, 1 PORTION
PT.FR.SP
DIA 26X18 CM.



RECTANGLE PLATTER
PT.SQ.20
DIA 20,7X13 CM.



RECTANGLE PLATTER
PT.SQ.29
DIA 29X18,2 CM.



OVAL PLATTER BIG
PT.OV.36
DIA 36 CM.



OVAL PLATTER BIG
PT.OV.40
DIA 40 CM.



BAMBOO PLATTER BIG
PT.BM.B
DIA 38 CM.



BREAD CONTAINERS
PT.BF.29
DIA 29X15 CM.



BAMBOO PLATTER SMALL
PT.BM.S
DIA 29 CM.



PIZZA PAN
PT.PZ.19
DIA 19,3 CM.

Unique designs for food presentation.

BONE CHINA



PLATTERS

| Diameter diagonal in cms.




CHIP N DIP PLATTER RECTANGULAR
PT.CND.RCT.3
DIA 27.4X15.4 CM.



CHIP N DIP PLATTER SQUARE
PT.CND.SQ.5
DIA 18.2X18.2 CM.



CHIP N DIP PLATTER OVAL BIG
PT.CND.OVL.8
DIA 32 CM.



CHIP N DIP PLATTER OVAL SMALL
PT.CND.OVL.5
DIA 24 CM.



WAVE PLATTER BIG
PT.WA.12



WAVE PLATTER SMALL
PT.WA.10



BADAM PLATTER
AA.BA
DIA 32X13 CM.



LEAF PLATTER BIG
PT.LEAF.33
DIA 33X19.1 CM.



LEAF PLATTER SMALL
PT.LEAF.25
DIA 24.8X14.4 CM.

platters

Absolute combination of elegance
and durability.



BOWLS

This new collection has a refreshingly modern touch. The series available in round, oval and square sets, created for a wide range of clients, it builds up a fine and harmonious balance between functionality and elegance.



DESSERT BOWL
BL DB 9
DIA 9/H 5.1/VOL 190ML



CONICAL BOWL
BL CON 10
DIA 10/H 5/VOL 170ML



RAMEKIN BOWL WITH GROOVES
BL RK 8
DIA 8/H 4.1/VOL 140ML



SOUFFLE BOWL
BL SOF 9
DIA 9/H 5/VOL 180ML



SQUARE BOWL SMALL
BL SQ 5.8
DIA 8/H 5.4/VOL 150ML



SQUARE BOWL BIG
BL SQ 8.8
DIA 8/H 7/VOL 220ML



GOURMET PLATE FLAT
BL GPF 11
DIA 28



GOURMET PLATE DEEP
BL GPD 11
DIA 28



RISSOTO PLATE DEEP
BL RPD
DIA 28



OVAL BOWL 1/2 POR
BL CH OVL 1/2
DIA 22X15/H 3.5/VOL 250ml



OVAL BOWL 1 POR
BL CH OVL 1
DIA 22.5X14.7/H 3.7/VOL 380ml



OVAL BOWL 2 POR
BL CH OVL 2
DIA 26X17/H 6/VOL 1170ml



7" SOUP PLATE
BL SP 7
DIA 18/VOL 220ml



9" SOUP PLATE
BL SP 9
DIA 23.3/VOL 320ml



10" SOUP PLATE
BL SP 10
DIA 26.4/VOL 430ml



Unique designs for food presentation.

BONE CHINA

GOURMET PLATES

| Diameter diagonal in cms.

Bowls



BOWL GOURMET
BL 3T17
DIA17x18xH4/VOL450ml



MONKEY DISH SMALL
BL 3K03
DIA8xH3.8



MONKEY DISH
BL 3K02
DIA11/VOL140ml



PIE DISH
BL PD
DIA22xH3.1



BUTTER DISH WITH HANDLE
ASC 3D RH
VOL 37ml



SOUP BOWL UNDERLINER
BL 3URC/SR 1/18
DIA 5/8 13/15/BL10.8
H4.8/VOL320ml



SOUP BOWL CHINESE
BL CH1
DIA20.4xH7.8/VOL220ml



SOUP BOWL 2 HANDLE
BL 3UR BC 2
DIA18.8xH4.8/VOL320ml



SOUP BOWL STACKABLE
BL 3T
DIA18.8xH5.3/VOL250ml



SOUP CUP NIKKO
BL 3K
DIA 11.8xH6.3/VOL400ml



SOUP CUP GE
BL 3C
DIA10.8xH6/VOL320ml



4" CURRY BOWL
BL CH7
DIA12.1xH3.9



6" CURRY BOWL
BL CH15
DIA18.8xH4.4/VOL300ml



7" CURRY BOWL
BL CH18
DIA18.8xH4.8/VOL360ml



8" CURRY BOWL
BL CH21
DIA21.1xH7.8/VOL490ml



BOWL 7CM
BL 3Z
VOL75ml



BOWL 8CM
BL 3H
DIA8.1xH3.4/VOL118ml



BOWL STACKABLE
BL 3TB 3
VOL120ml



BOWL 8.5CM
BL 3H 3
DIA8.5xH4.2



BOWL 9CM
BL 3Y
DIA9.2xH4.6/VOL150ml



BUTTER DISH 8 CM
ASC 3D B
DIA8.5xH4/VOL165ml



DIP BOWL
BL 3H
DIA6.9xH2.5/VOL100ml



RAMEKIN BOWL PLAIN
BL 3KX
DIA7.5xH2.8/VOL120ml



6" NAPPY BOWL
BL 3UR NP16
DIA16.8xH2.2/VOL350ml



7" NAPPY BOWL
BL 3UR NP18
DIA18.3xH3.1/VOL360ml



CURD BOWL
BL 3UR CB
DIA10.8xH4/VOL210ml



TRIANGLE BOWL DEEP SMALL
BL 3D 3
VOL250ml



TRIANGLE BOWL DEEP BIG
BL 3D 8
DIA12.8xH4.8/VOL400ml



TRIANGLE BOWL 1 POR
BL 3H 1
DIA17.8xH3/VOL400ml



TRIANGLE BOWL 2 POR
BL 3H 2
DIA18.8xH3.8/VOL600ml

| Diameter diagonal in cms.



Variety of bowls offering banquet & table settings.

Accessories



CHOPSTICKS STAND
ASC CHS1
L 7.0

CHOPSTICKS STAND
ASC CHS2
L 6.3

SALT & PEPPER MINI
CTM
DIA 3.5/H 4.7

SALT & PEPPER HW
CTUR
DIA 4.2/H 7.2

CRUET SET MAZE
CTMAZ
DIA 11

TOWER CRUET SET
CTTDW
DIA 2.9/H 10.3

BUDVASE HW
FVLR
DIA 2.0/H 12.5

STRAW HOLDER
ASC SH
DIA 4.2/H 7.2

TOOTH PICK HOLDER
ASC TPH
DIA 5/H 5.3

EGG CUP SINGLE
EC URS
DIA 5.1/H 6.9

EGG CUP DOUBLE
EC URD
DIA 6.8/H 9.1

NAPKIN HOLDER
ASC NH
DIA 13/H 7

SHELL ASHTRAY 2 CUT
ASC AT3SHELL
DIA 9.8/H 1.9

ASHTRAY ROUND 3 CUT
ASC AT3
DIA 9.3/H 3.0

KIMCHI DISH ASSORTMENT
ASC KAD ASR
DIA 21.6/H 5.5

YIN YAN DISH
ASC YIN
DIA 17

ASSORTMENT DISH
ASC ASS
DIA 17

SOY SAUCE DISPENSER
ASC SDF
VOL 170ML

SPOON SOUP
SN DR
DIA 13.4

PICKLE SPOON
SH SAU
DIA 12

PICKLE TRAY 3 COMPT.
ASC PPT 3
DIA 21.9/H 2.5

PICKLE TRAY 10 PCS. SET
ASC P15 10

DESERT SPOON S.
SN DST S
VOL 12ML

CANDLE STAND
ASC CS
BOTTOM DIA 7/H 5

OLIVE DISH
ASC OLV
DIA 11.5

PICKLE TRAY TRIANGLE
ASC PTE TR
DIA 16/H 1.9

PICKLE TRAY SET TRIANGLE
ASC PTE TR
DIA 16/H 1.9

SILK GRAVY BOAT
BL GSB
VOL 310

GRAVY/SAUCE BOAT SMALL
BL GSB
VOL 240

GRAVY/SAUCE BOAT BIG
BL GBB
VOL 450

KIMCHI DISH TRIANGULAR
BL KD TR
DIA 11/H 3.3

SOAP DISH
ASC SD
DIA 4X14.5/H 2.5

| Diameter diagonal in cms.



With the delicate appearance and durability enchanted by its brilliant glaze, specially designed to perfectly suit the luxurious table setting in the finest five star hotels and restaurants, from oriental cuisine to the formal western style dining.



- 1 | Desert Spoon B.
SN DST B
VOL 60ML
- 2 | 2 Compartment Dish
ASC PD2
VOL 60ML
- 3 | 3 Compartment Dish Large
ASC CON LARGE
L 45.1





								
DIRECTOR MG, DR DIA7.0/H7.5 VOL266ML	PIPE MG, PP DIA7.2/H8.1 VOL236ML	MB MG, MB DIA8.5/H9.0 VOL390ML	ORCHID MG, ORC DIA8.4/H9.9 VOL350ML	MUDDY MG, MUDDY DIA9.1/H11 VOL370ML	ANNY MG, AN DIA7.8/H10.5 VOL420ML	ZING MG, ORC DIA8.4/H9.9 VOL350ML	KONIKAL MG, KON DIA9.4/H11.4 VOL370ML	BEER MUG MG, BEER VOL570ML

accessories

- HANDI BIG
ASC, HD, B
DIA14.4/H10.9/VOL1500ML
- HANDI SMALL
ASC, HD, M
DIA11.8/H8.2/VOL700ML
- Onion Bowl
BL, OB, S

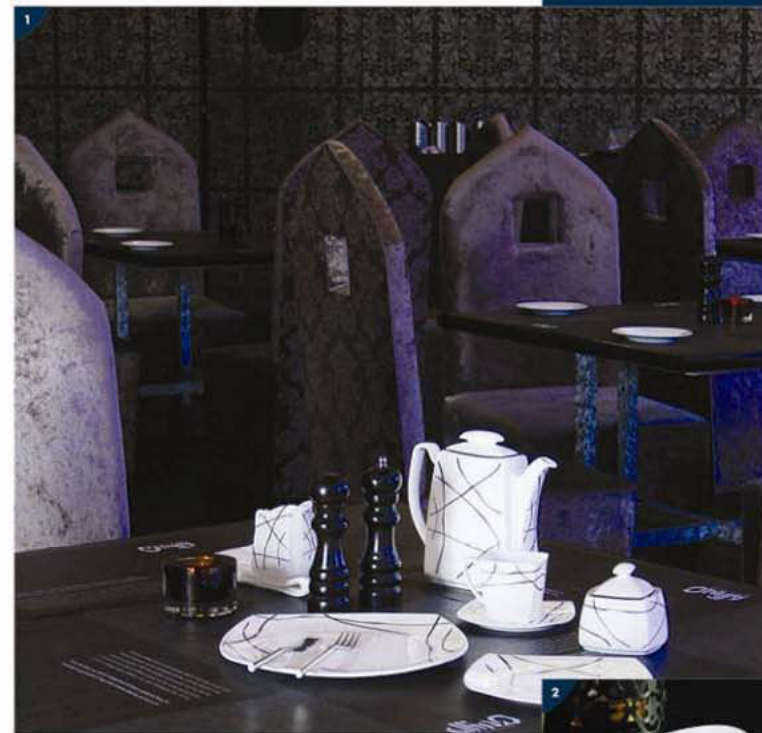


| Diameter diagonal in cms.



| D.No. 2555

showcase



- 1 | D.No. 2720
- 2 | D.No. 5555
- 3 | D.No. 2308
- 4 | SPECTRA



Strong graphic lines combined with a natural form of asian style creates a relaxed yet stylish table setting.



With the delicate appearance and durability enchanted by its brilliant glaze, Claycraft is specially designed to perfectly suit the luxurious table setting in the finest five star hotels and restaurants, from oriental cuisine to the formal western style dining.

- 1 | CRYSTAL
- 2 | D. NO. 3607
- 3 | MONA ARMY 110



Gold always symbolize "Royal" be it a way of royal welcoming or royal food or royal ambience.



- 1 | MARBLE
- 2 | KOK



1 | D.No. 2714

2 | D.No. 2664

3 | D.No. 3604

Healthy diets are very much in vogue.
More and more guests expect a wide choice of fresh, light and healthy dishes.
That calls for tableware that reflects this trend and whose shape and design bring it to the guest's table together with culinary creations. With its colourful but unobtrusive patterns, this range of tableware speaks the language of the times and lends a friendly face to modern style.

crayon series



simplicity & fashion

Colour plays the main role here
for a fresh and lively table.

CRAYON SERIES

38-39

showcase



Precautionary tips for Bone China Tableware

- Wash as soon as possible after use and store after it is dried.
- The design with gold, platinum should be hand washed gently, as its easy to come off by harsh wash.
- To remove stubborn stains, soak item in hot water (40-60° C) and bleach. Hard scrubbing leads to surface scratching.
- Never wash cutlery or metal item with pottery.
- Whenever possible, rack it. Don't stack it.
- Avoid thermal shocks e.g. Oven to cold surface, freezer to hot oven or exposure to flame.

